



# H4L

## SUBMERGED MEMBRANE FILTRATION MODULE

• CUSTOM-MADE • HYBRID • MODULAR • SAFEGUARD Technology<sup>®</sup>

EASE OF SERVICE

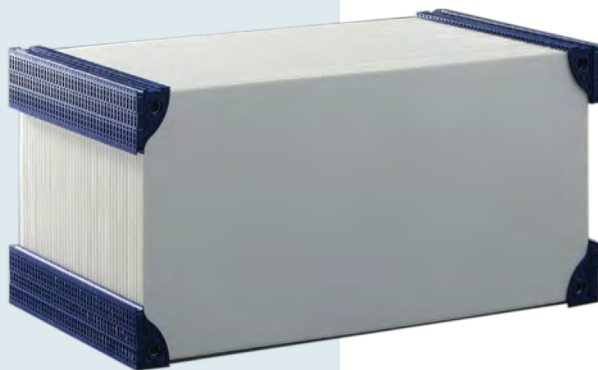
# H4L

## SUBMERGED MEMBRANE FILTRATION MODULE

It has never been easier to select your configuration and the design of your submerged membrane module. Thanks to the extensive configurability of the individual elements of the H4L module, a solution can be found for almost all application challenges you can think of. This makes the **MYT.H4L** module unique on the market.

### CONSISTENTLY OPTIMISED

Our entirely new concept for the base support is light weight, exceptionally stable, and adaptable for all different **MYTEX-BLOCK** sizes. Designed as push-fit solution, it reduces shipping costs and eases assembly. The **MYT.H4L** is highly reliable in operation thanks to its hydraulically optimized design, with flow guide plates to induces an additional directed crossflow to the sides. The frame-less design offers a high degree of access for ease of cleaning and maintenance. Thanks to the push-fit design, handling without special mechanical equipment is possible. Nevertheless, fully assembled modules can be lifted by crane.



### FUNCTIONAL COMPONENTS

The **MYT.H4L** has two functional units: the **MYTEX-BLOCKS** and the base support. The **MYTEX-BLOCKS** are similar to **LEGO®** blocks, have permeate extraction on each corner, and are connected to each other by the permeate manifold. The base support is equipped with scouring air supply via fine bubble diffusers for crossflow aeration.

### APPLICATIONS

#### WASTEWATER

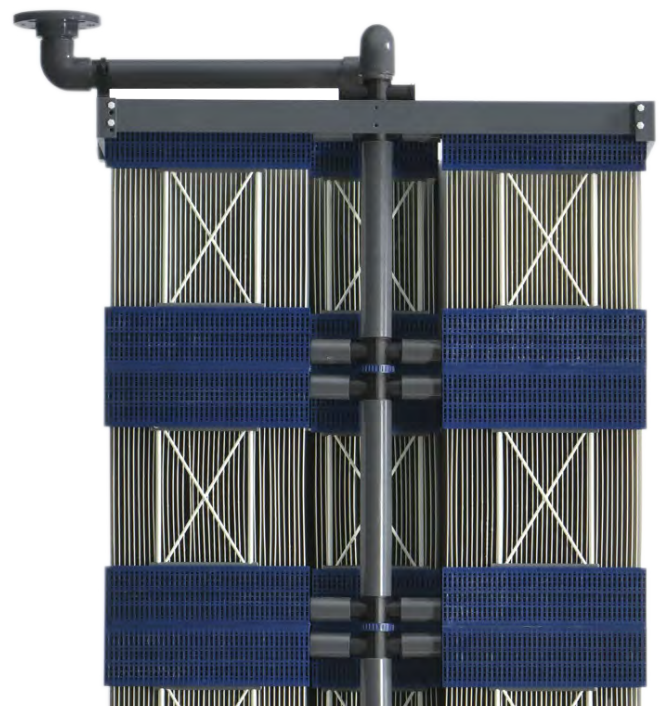
Membrane Bioreactor (MBR), filtration of treated sewage effluent (tertiary filtration), pre-treatment to further downstream treatment processes (e.g. RO)

#### WATER

surface water treatment, rinsing and backwash water treatment, pre-treatment to further downstream treatment processes (e.g. RO), ultrapure and service water treatment, animal pool water treatment, public swimming pool water treatment

#### PROCESS WATER

Treatment of wastewater originated from the textile, food or beverage production, treatment of cooling tower blow down, boiler feed water etc.





- COSTUM-MADE
- MODULAR
- HYBRID
- EASE OF SERVICE
- SAFEGUARD TECHNOLOGY<sup>©</sup>

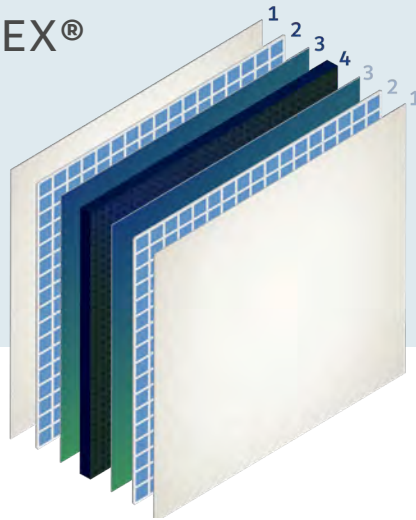
## OPERATION

The design of the filtration stage is defined case by case and according to customer specific project conditions, examples:

- Gravity filtration with backwash from an elevated tank
- Gravity filtration with permeate flow control using the water level in permeate tank
- Filtration and backwash using a reversible positive displacement pump
- Filtration using a filtration and a separate backwash pump

## MAXIMUM INDIVIDUALITY & HIGHEST EFFICIENCY through MYTEX<sup>®</sup>

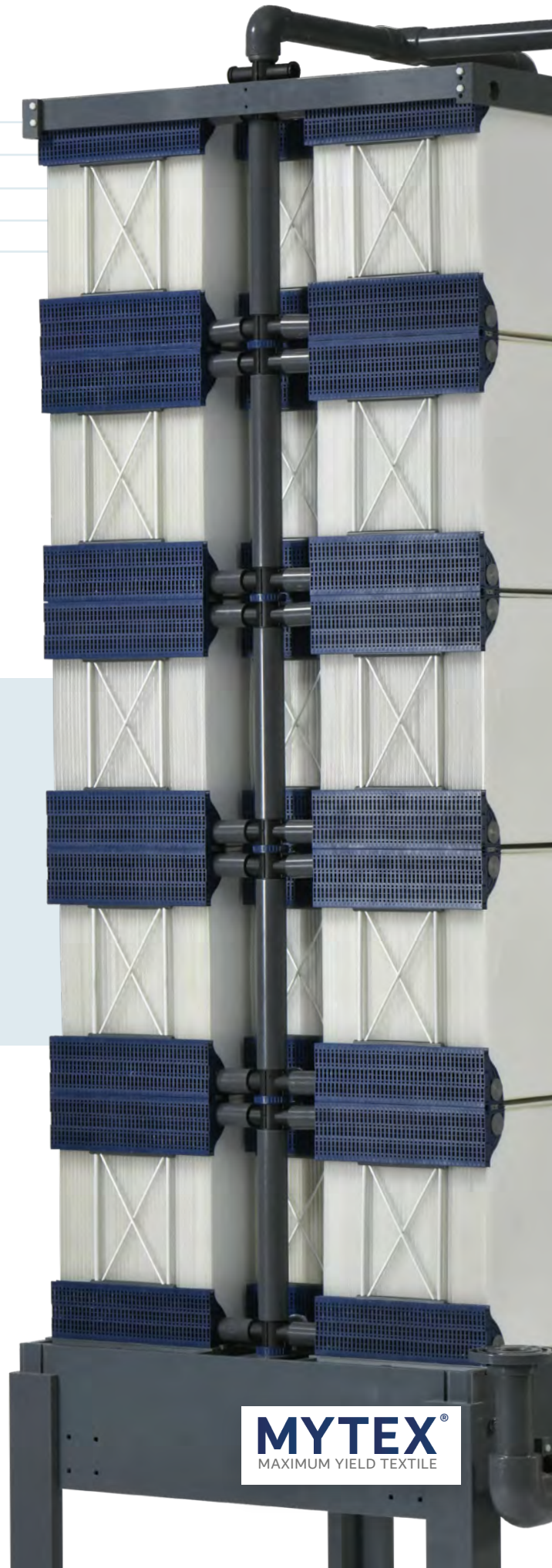
- 1 Membrane
- 2 Carrying layer
- 3 Adhesive fabric
- 4 Drainage layer



## SERVICE

On your doorstep - world wide support through our partner network.

With our partner network we can offer a comprehensive service network. Whether it is the integration of new modules in an existing system, or the commissioning of a new system, a contact person will support you on site in case of questions, problems or spare part requests. We are happy to assist you with our partners - competent, simple and fast.





WE LIVE FILTRATION



## H4L

### CUSTOM-MADE

#### TECHNICAL SPECIFICATION

##### MATERIALS OF CONSTRUCTION

- Module frame: PVC, others on request
- MYTEXBLOCKS: ABS, membrane sheets

##### MEMBRANE

- Material: PES, PVDF or customer specific
- Separation process: ultrafiltration or microfiltration
- Nominal pore size: 0,01  $\mu\text{m}$  to 1  $\mu\text{m}$  available

##### CONNECTIONS (other types available on request)

- Permeate: Flange PVC-U; DN 50 (PN 16)
- Air: Thread PVC-U; d63 (PN 16)

##### OPERATING CONDITIONS

- Temperature range: 0°C to 50°C
- Pressure range: -800mbar to +300mbar
- pH range (Cleaning): 2 to 11
- Chlorine resistance:  $\geq 500.000$  ppmh (Cl)

We make your MYTEX modules  
as you need it!

#### WTA TECHNOLOGIES GmbH

Fritz-Bothmann-Str. 1  
99867 Gotha (Germany)

T.: +49 (0) 3621 73 77 920

F.: +49 (0) 3621 73 77 921

info@wta-tec.com | www.wta-tec.com

